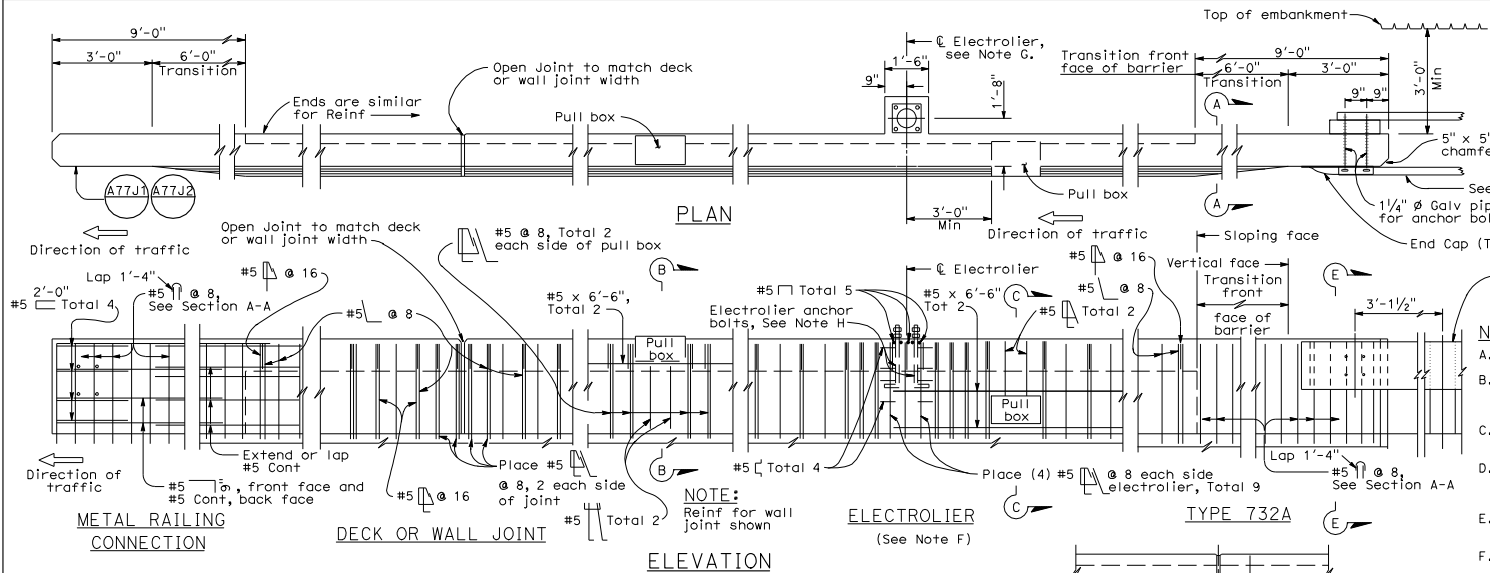


273



DIST	COUNTY	ROUTE	POST MILES TOTAL PROJECT	SHEET NO.	TOTAL SHEETS

REGISTERED CIVIL ENGINEER

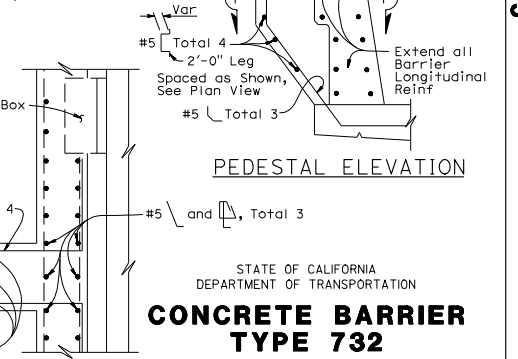
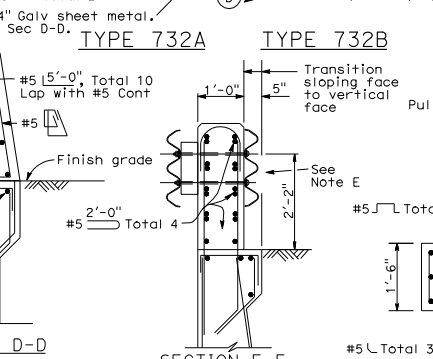
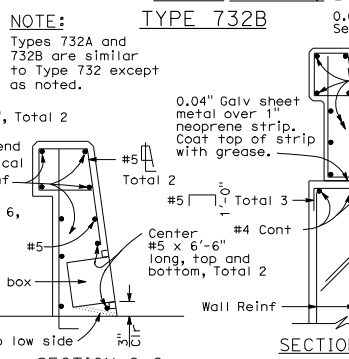
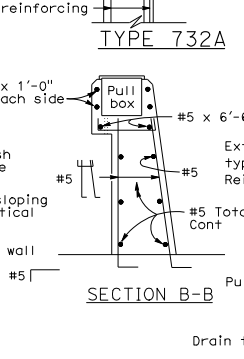
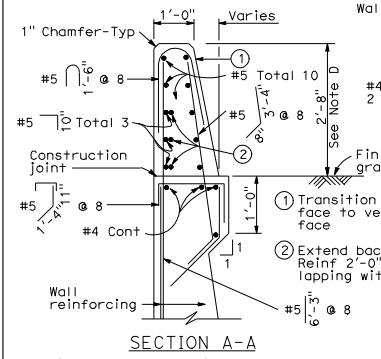
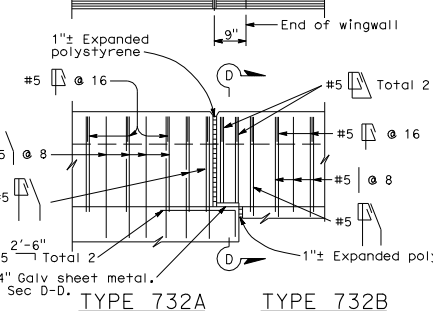
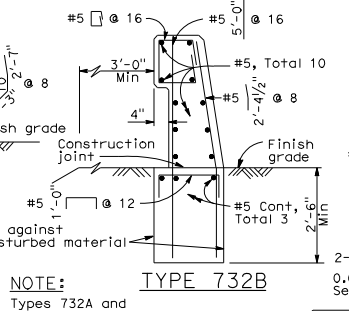
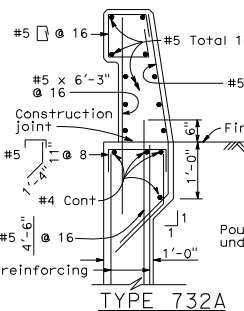
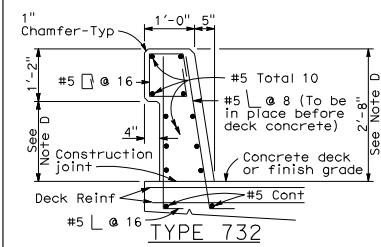
May 1, 2006  
PLANS APPROVAL DATE

Tillot Satter  
No. C42892  
Exp. 03-31-08  
CIVIL  
STATE OF CALIFORNIA

The State of California or its officers or agents shall not be responsible for the accuracy or completeness of electronic copies of this plan sheet.

To get to the Caltrans web site go to <http://www.dot.ca.gov>

- NOTES:**
- A. Walls are to be backfilled before barrier is placed.
  - B. Clearance to reinforcing steel in barrier to be 1", except as noted. Longitudinal reinforcement to stop at all expansion joints.
  - C. See Project Plans for locations of electroliers and pull boxes.
  - D. Dimensions may vary with roadway cross slope and with certain thickness of surfacing. See Project Plans.
  - E. For typical metal railing connection details not shown, see Standard Plans A77J1 and A77J2.
  - F. See Standard Plans ES-9A, ES-9B, ES-9C, ES-9D and ES-9E for electrical details. The maximum number of conduits in the barrier is limited to two (2) 2" conduits along with one (1) 3" conduit. When a 3" conduit is used, it is restricted to the base of the barrier.
  - G. For electrolier mounting details, See Standard Plans ES-6A and ES-6B.
  - H. Minimum concrete edge distance, to the reinforcing shown, shall be maintained. Edge distance may be adjusted to accommodate increase in concrete cover for architectural treatment.



Details shown for barrier anchorage to Type 732A. Anchorage for barrier Types 732 and 732A are similar to their respective details.

STATE OF CALIFORNIA  
DEPARTMENT OF TRANSPORTATION  
**CONCRETE BARRIER  
TYPE 732**  
NO SCALE

**B11-55**

2006 STANDARD PLAN B11-55